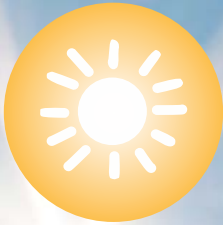


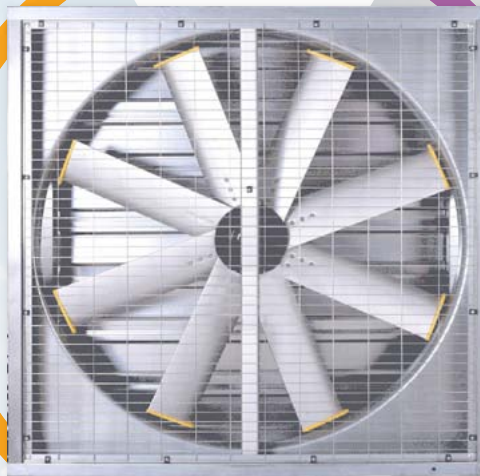
# Maxiflow

**TYPE S**

**Hybrid Solar Powered Ventilation Fan**



**High Efficiency  
Solar Powered**



**Energy saving AC  
power backup**



CFW Fans presents a new generation  
**Industrial DC Exhaust Fan,**  
powered by **solar energy**  
with **automatic changeover**  
**to mains supply** when required

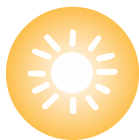


## Applications

- Factories
- Warehouses
- Animal Husbandry
- Greenhouses

## Features & Benefits

- Excellent energy savings with fast return on investment
- Fan is directly powered by the solar panel, no inverter
- Smart Hybrid supply – seamless operation by solar and grid supplied electricity
- Maintenance free direct driven fan (no belts or pulleys)
- Unique IP68 waterproof brushless DC high efficiency motor
- Safe DC 36 V modular fan system with fast plug & play connection.



In bright sunlight, the fan is directly powered by the solar panel, at no electricity cost

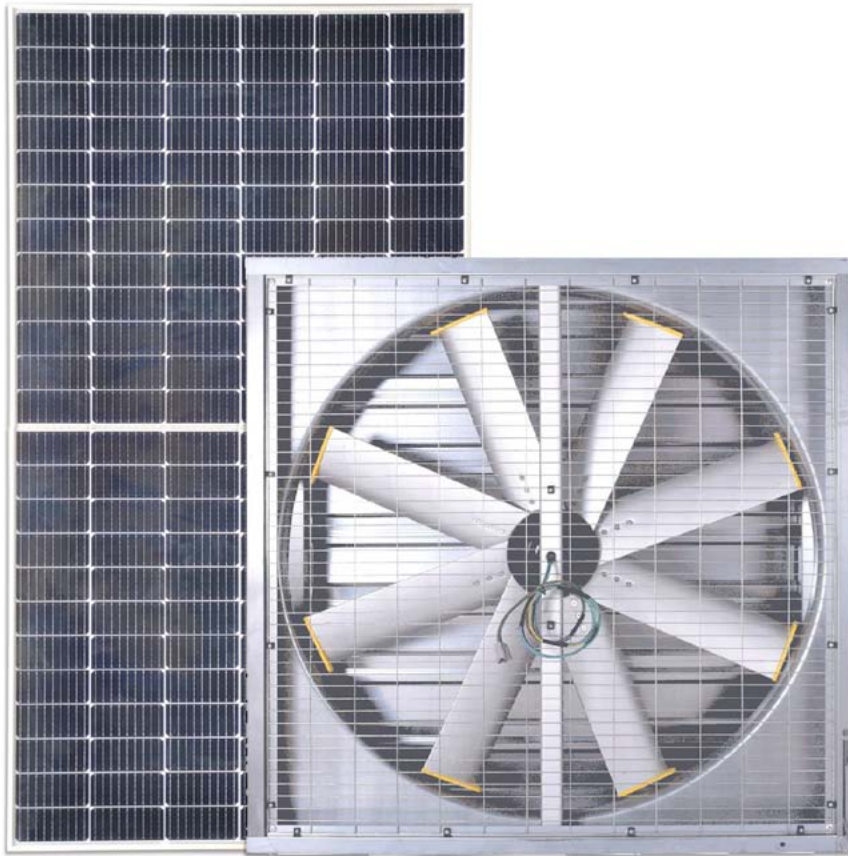


During overcast weather, the fan is powered by both solar and grid power



At night, the fan runs continuously on mains supply, while still low in power consumption





AC DC adapter



Power controller

## Specifications for Maxiflow Hybrid Solar Powered Ventilation Fan

<b>Model</b>	Maxiflow GFS-1092-MSDA-0.32kWM
<b>Solar panel</b>	440 W 36 V Monocrystalline
<b>Fan type</b>	Direct drive axial with brushless DC motor
<b>Fan impellar</b>	Ø 1092 mm 8 bladed aluminium axial aerofoil
<b>Fan housing size</b>	1220 x 1220 x 350 mm
<b>Fan housing</b>	Pre-galvanised sheetmetal with automatic shutters and wire mesh screen
<b>Motor</b>	High efficiency permanent magnet brushless DC motor
<b>Motor ingress protection</b>	IP68
<b>Fan speed</b>	420 RPM
<b>Power controller</b>	Included
<b>AC / DC adaptor</b>	Included, to use mains supply as energy backup AC input: 240 V / 3 A / 50–60 Hz DC output: 36 V / 8.9 A
<b>Operation</b>	24 hours: solar when sun is available; automatic switchover to mains backup during sunless periods
<b>Airflow at full speed</b>	25 500 m <sup>3</sup> /h
<b>Shutter opening system</b>	Overcentre weight
<b>Noise level*</b>	< 65 dBA

# Maxiflow

## TYPE S

### Hybrid Solar Powered Ventilation Fan



Energy-efficient  
solar powered



High efficiency smart  
hybrid supply



Energy backup  
running 24 hours



Quality  
assurance



High quality BLDC  
motor



Quick investment  
return

#### Notes:

1. Information provided in this brochure was correct at the time of printing. However, due to continuous efforts to improve our products, CFW reserves the right to make changes without notice. Please check with your sales representative for the latest information before designing your system.
2. Please note that these fans are designed to operate at very low pressures, & even the prevailing wind can be a problem if not properly factored into the design. They are light-weight, low-cost fans that are designed only for ventilation applications. We recommend that they are not used in applications requiring pressure drops higher than 60 Pa. Please check with your sales representative when designing your system.
3. Important: Please refer to the Operating, Installation, & Safety manual before installing Maxiflow Fans to ensure a safe trouble-free installation.
4. \* dBA @ 7m (for comparison purposes only).
5. Warranty: The fans are guaranteed against defects in workmanship and/or materials for a period of 12 months, from date of invoice. Please note that this is a **carry-in** guarantee. A full explanation of our warranty is contained in our standard conditions of sale, a copy of which is available on request.

CFW Fans (Pty) Ltd Reg. No. 2006/018121/07  
CFW Industries (Pty) Ltd Reg. No. 1998/022124/07

**SABS**  
150 9001

#### CAPE TOWN HEAD OFFICE

Tel: +27 (0) 21 931 8331  
E-mail: sales@cfw.co.za  
3 Parin Road, Parow Industria  
PO Box 1542, Parow 7499  
South Africa

#### JOHANNESBURG OFFICE

Tel: +27 (0) 11 452 5830/3/4  
E-mail: salesjhb@cfw.co.za  
4 Chilworth Road  
Founders View North, Modderfontein  
Johannesburg, Gauteng

#### GQEBERHA OFFICE

Tel: +27 (0) 83 301 6357  
E-mail: richardm@cfw.co.za  
52 Louis Botha Crescent  
Summerstrand  
Gqeberha

Visit our website [www.cfw.co.za](http://www.cfw.co.za)

